

COMPANY REVIEW

# PRIMARY HEALTHCARE CLINICS

---

*a tele medicine company*

# Our History

Year of  
Establishment

~~1971~~

our parent company

40+

AREA OFFICES, 50 TELE MEDICINE CLINICS



6500+

HAPPY EMPLOYEES

AREAS OF  
BUSINESS

POULTRY, HATCHERIES, EDUCATION HEALTHCARE,  
FEED FACTORY,  
REAL ESTATE, MINING

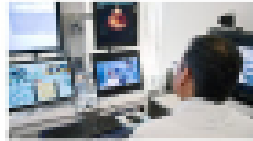
# Services

“Tele Medicine allows us to connect the patient to the doctor and erase the distance between them. We will bring the doctors where the patients are.”

Sunit Kalia  
Founder & MD

- Primary Healthcare Hospital to treat rural patients with Telemedicine
- 80% of rural Indians do not have access to critical medicine
- Doctors to do a better job in analyzing diseases in patients
- Preventable and curable diseases dominate the morbidity pattern
- Patients to get better treatment in Primary Healthcare Hospital's, without need to go to city hospitals
- Specialist experience doctors

## OFFERINGS & SERVICES

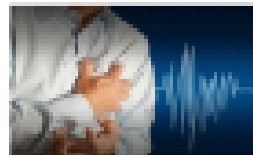


### TELE CLINIC

This is usually done between two clinical locations. Using ICT services, data and audio/video interactions are exchanged between the two locations. These centers are provided the required hardware and medical device this facilitates access to quality medical (specialty) services irrespective of the location of the patient across the globe.

### TELE RADIOLOGY

Through tele-radiology, radiological patient images, such as x-rays, CTs and MRIs can be transmitted to Primary Healthcare Hospital's specialists for interpretation and/or consultation.

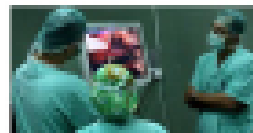
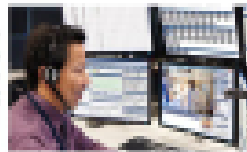


### TELE CARDIOLOGY

Tele-cardiology services enable immediate access to cardiologist, especially in life threatening situations. In tele-cardiology, ECGs are transmitted from remote locations to Hospital for Cardiologist's opinion/second opinion to help the remote medical care providers stabilize and/or shift remote patients if required.

### TELE ICU (ACCISE)

Primary Healthcare Hospital is revolutionizing critical care by enabling remote monitoring of ICU patients 24x7 by critical-care-experts. This service enables the specialist to monitor multiple patients at a time without moving from one bed to another. The USPs of the service are 24x7 monitoring & expert opinion, Better patient outcomes, increased operational efficiency and competitive advantage.



### TELE EMERGENCY

Primary Healthcare Hospital's emergency care enabled remote hospitals to consult our emergency care specialists round the clock stabilize and monitor the patients in remote hospitals and/or during transfer of such patients to major hospitals.

### TELE PREVENTIVE HEALTHCARE SERVICES

As in this industrialized world, healthcare delivery is moving from the hospital/clinic into homes and workplaces. Primary Healthcare Hospital provides regular healthcare checkups and monitoring services to improve wellness and prevent/curable diseases. This mitigates highest/expensive healthcare services.



### TELE MOBILE MEDICAL SERVICE

Medical facilities along with healthcare professionals are placed in mobile medical units (vehicles) to provide healthcare services in remote locations. Such mobile medical units are constantly linked to major hospitals through communication technology for specialty consultation.

### TELE HOMECARE

Primary Healthcare Hospital provides life monitoring/ remote monitoring services for elderly people at all levels e.g. from simply monitoring their well being to chronic disease management or monitoring services for terminally ill patients. Such monitoring is provided using peripheral medical & monitoring devices and supervisor-of doctors from our hospitals.

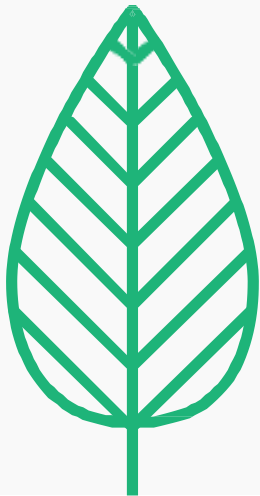


### TELE EDUCATION

Continuing Medical Education (CME) is very vital for healthcare professionals to render high quality services in line with new developments, both in urban and rural locations. Telemedicine provides robust platform for delivering CMEs in remote locations thereby helping doctors save travel time.

### TELE VETERINARY SERVICES

- Record and store the veterinary data for further use and reports
- Connect to expert doctors for consultation with expert veterinary doctors.
- Enable mass disease Surveillance programme to identify and control disease outbreaks in veterinary field



“

“

The more we **Learn** and **Live**  
with **Diversity** the more we can  
**Contribute** to the **Mankind**.

*V. V. Subramanian*  
Chairman  
Phoenix Group



# Mission and Vision

## The Ultimate Goal

---

Our goal is to connect one doctor to many patients across borders via digital healthcare using our tele medicine platform

We operate in India and Philippines with over 50 clinics

2019 we plan to set up 1000 clinics based on our AI based healthcare softwares.





# What We Achieve with Telemedicine Clinics

- No monthly cost of maintaining of the software Web based on AWS server
- Fast
- Secure data transfer on AWS Seamless connectivity options
- Allows capture of all patient EMR (Electronic Medical Record) and data such as Patient History, Diagnosis, Vital signs, Treatment Plan, Surgeries, Investigations. etc
- Integration with Medical equipment like ECG, BP, Heart Rate, Pulse & SPO2
- Plug-n-Play Architecture
- Specialty consultation Support, Second Opinion Support & Referrals
- Support
- Indian Telemedicine Standards and Electronic Healthcare Record Standards Support.
- Integration with Peripheral Medical Devices which measure vitals like, Heart Rate, Digital Stethoscope, ECG, PFT, BP, SpO2
- Telemedicine Consulting Software at patient's end. APP available of Android and iOS free of cost
- 
-

**80% of Internet  
Users look  
online for  
health  
information**

**88% of physicians  
would like patients to  
be able to track or  
monitor their health at  
home**

# MEET THE SPECIALISTS

*Our Specialist Doctors via Tele Medicine*

---



- Allergist or
- Immunologist
- Anesthesiologist
- Cardiologist
- Gastroenterologist
- Internal Medicine
- Physician
- Neurologist
- Obstetrician
- Gynecologist
- Occupational Medicine
- Physician
- Pathologist Psychiatrist
- Pulmonary Medicine
- Physician
- Diagnostic Radiologist
- Rheumatologist
- Urologist

**"Our goal is to connect one doctor to many patients across borders via digital healthcare using our tele medicine platform"**

Founder MD, Sumit Kalia  
Primary Healthcare Clinics

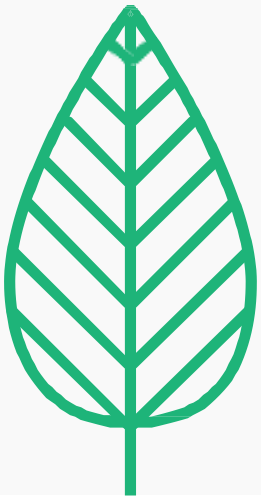


# Sustainability

---

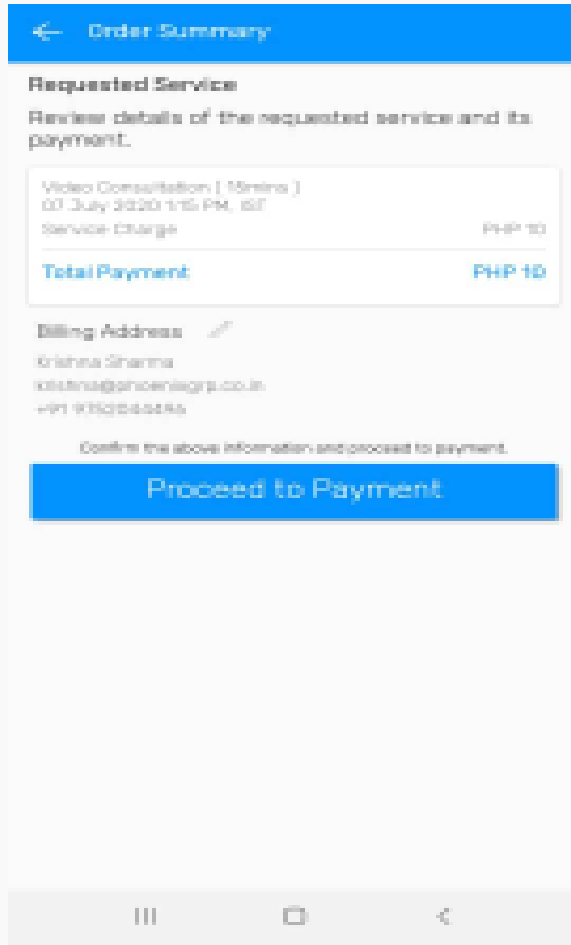
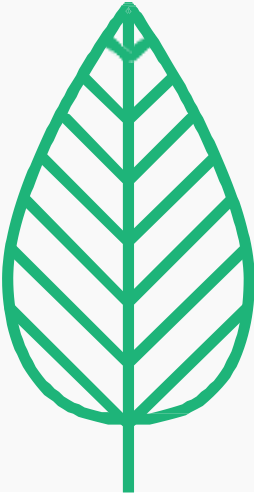
## LEARN ABOUT OUR SUSTAINABILITY MODEL

- Enable reach of Doctor to all the Urban slums / Rural Patients
- Create individual Digitized electronic medical records
- Create demographic based Health Census with Data
- Use Power of data analytics for predictive outcomes.
- Manage Immunization programs with clear data insights.
- Bridge patient to Doctor ratio in Rural, Tribal & Urban Slums
- Nutrition and health advise for pregnant women
- Render care and education through best medium
- Facilitate more timely and precise diagnosis and treatments of chronic diseases.
- Create future health programs with real time health data
- Use epidemic alert for proactive handling of diseases outbreaks
- 



# Payment

## DOCTOR PATIENT PAYMENT MODE



← Order Summary

**Requested Service**  
Review details of the requested service and its payment.

Video Consultation ( 15mins )  
07 July 2020 1:15 PM - 07  
Service Charge PHP 10

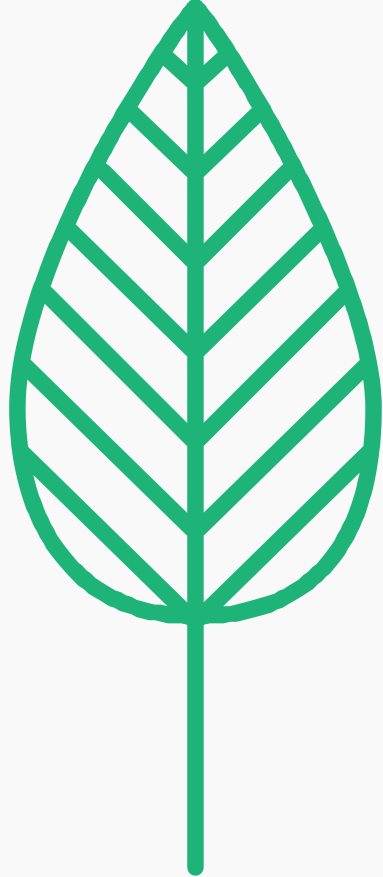
**Total Payment:** PHP 10

**Billing Address** ✓  
Krishna Sharma  
ksharma@phc-hospital.com  
+91 9123456789

Confirm the above information and proceed to payment.

**Proceed to Payment**

- Through our platform patient can do online payment at the time of booking Appointment with the doctor
- Doctor can get payment directly into their account
- Patient can make payment using our payment gateway platform
- Payment made with this gateway module are secure as it is done on AWS server
- Customization of payment gateway can be done according to Hospital Doctor Needs



# Get in Touch

---

## Mailing Address

PHOENIX HOUSE , RATAN COLONY, JABALPUR ,MP  
INDIA  
6789 AYALA AVE, 16TH FLOOR , MAKATI  
PHILIPPINES

## Email Address

[info@primaryhospital.com](mailto:info@primaryhospital.com)  
[primaryteleservices@gmail.com](mailto:primaryteleservices@gmail.com)

## Phone / Viber / Whats app

+91 9685043477